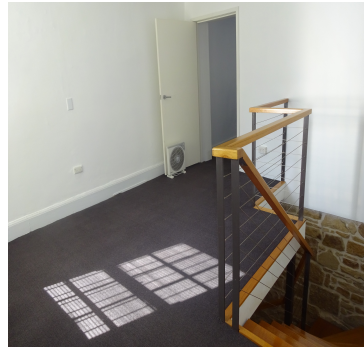


220 Crown Street, Darlinghurst



Description

Impressive Character filled 2 level office/creative space 100sqm over two levels Features exposed sand stone walls Classic polished concrete floors Full modern eat in kitchen Contemporary self-contained bathroom Air conditioned First floor spacious & sunny outdoor veranda Common area features out-door garden setting Common bathroom facilities Metres from Oxford Street & William Street

Property Details

Property Address: 0, 0, 0 0

Agents's Details

“CHOOSE TO MAKE IT HAPPEN”

Copyright 2015, D'Ettorre Real Estate