



### 3/351 Edgecliff Road Edgecliff NSW

3  1  2 

Quietly positioned at the rear of the well-maintained 'Arlington' strata building, this split-level apartment offers impressive space, natural light and a peaceful garden outlook. Set back from the main road and surrounded by greenery, Apartment 3 presents an excellent opportunity for those looking for a well-located and peaceful place to call home.

Designed for relaxed everyday living, the generous floorplan includes a large eat-in kitchen, open-plan living and dining, and a spacious balcony overlooking the treetops. Three well-sized bedrooms, a full bathroom with separate toilet, internal laundry, storage room and two secure undercover car spaces complete this rare offering.

**Type** : Apartment  
**Building Size** : 130 sqm  
**View** : <https://www.dettorre.com.au/lease/nsw/eastern-suburbs/edgecliff/residential/apartment/8615084>

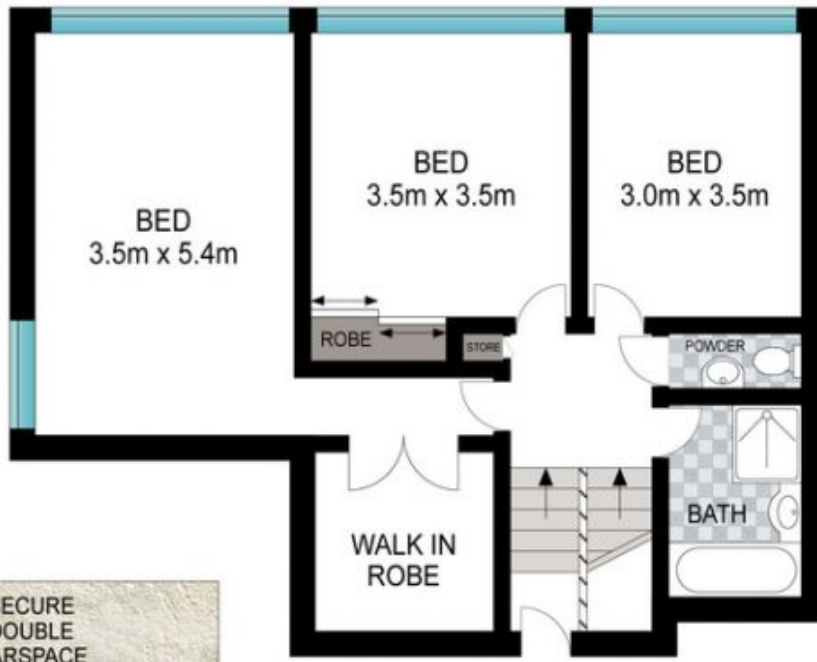


**Samuel Pacitto-Rusconi**  
02 8354 0896

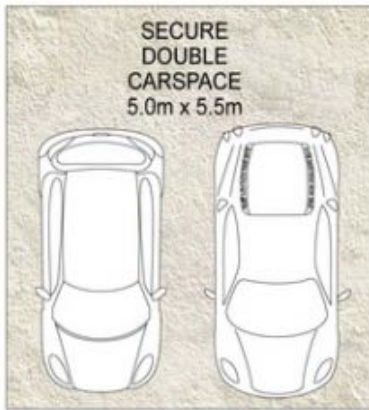


**Antony Cazzato**  
02 8354 0896

[For full version visit the website](https://www.dettorre.com.au)



**ENTRY LEVEL**



**LOWER LEVEL**



Scale in metres. Indicative only. Dimensions are approximate. All information contained herein is gathered from sources we believe to be reliable. However we cannot guarantee its accuracy and interested persons should rely on their own enquiries.

3/351 Edgecliff Road, Edgecliff