



# Soho

ON SURREY

DARLINGHURST

**74-76 Surrey Street**  
**PRICE LIST & FLOOR PLANS**

*"Secure your own brand new loft & studio apartment in highly sought after Darlinghurst"*



DA APPROVED SLEEK & STYLISH  
ARCHITECTURALLY DESIGNED

5 LEVEL BOUTIQUE STRATA BLOCK OF 10 OVERSIZED STUDIOS & LOFT APARTMENTS



# Soho



ON SURREY

DARLINGHURST

## SALES PRICE LIST

Apartment	Size* (m <sup>2</sup> )	Level	Asking price
<b>1</b>	44	LG 1 & 2	<b>SOLD</b>
<b>2</b>	51	LG 1 & 2	<b>SOLD</b>
<b>3</b>	49	LG 1 & 2	<b>SOLD</b>
<b>4</b>	41	Ground	<b>SOLD</b>
<b>5</b>	35	Ground	\$595,000
<b>6</b>	41	Ground	<b>SOLD</b>
<b>7</b>	41	1 <sup>st</sup> Floor	<b>SOLD</b>
<b>8</b>	46	1 <sup>st</sup> Floor	<b>SOLD</b>
<b>9</b>	39	2 <sup>nd</sup> Floor	<b>SOLD</b>
<b>10</b>	41	2 <sup>nd</sup> Floor	<b>SOLD</b>

\*Sizes are not inclusive of a 1 sqm bike rack

DA APPROVED SLEEK & STYLISH  
 ARCHITECTURALLY DESIGNED  
 5 LEVEL BOUTIQUE STRATA BLOCK OF 10 OVERSIZED STUDIOS & LOFT APARTMENTS

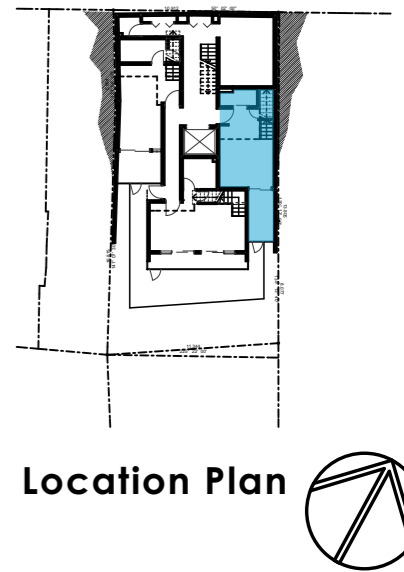
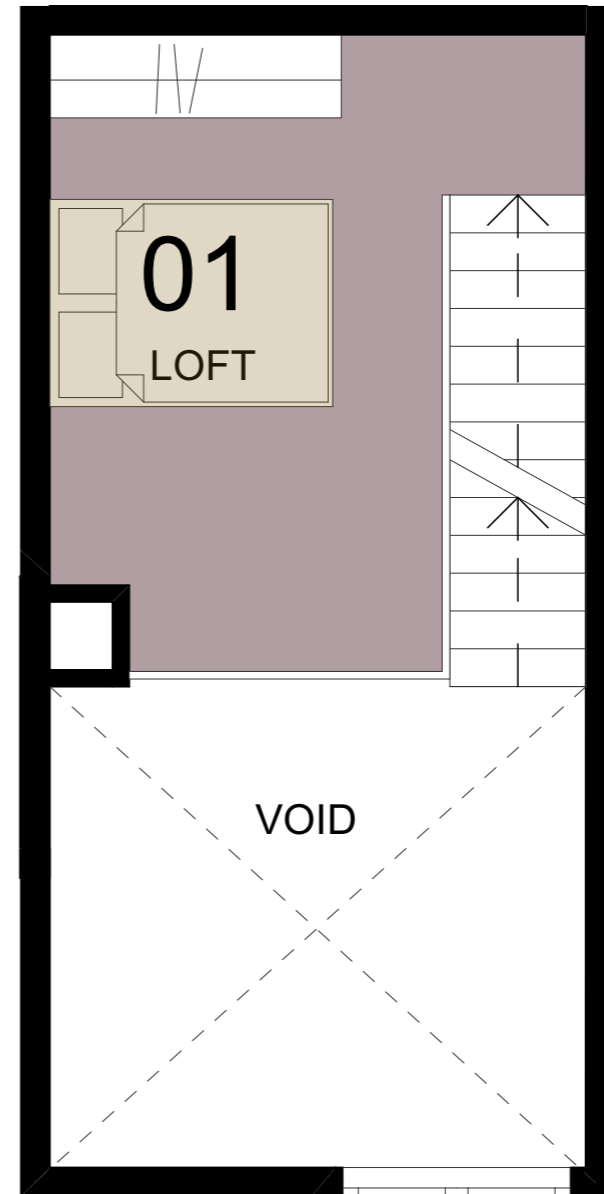
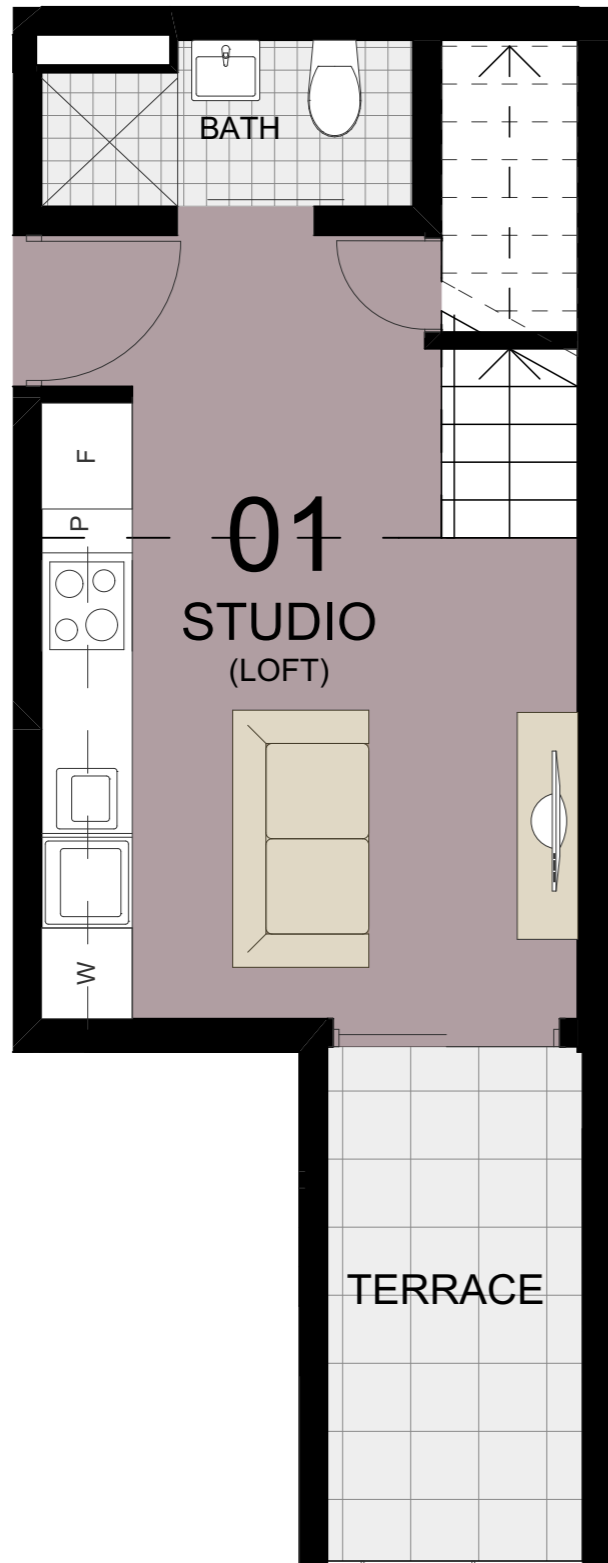


# Soho

ON SURREY  
 DARLINGHURST

## RENTAL APPRAISAL

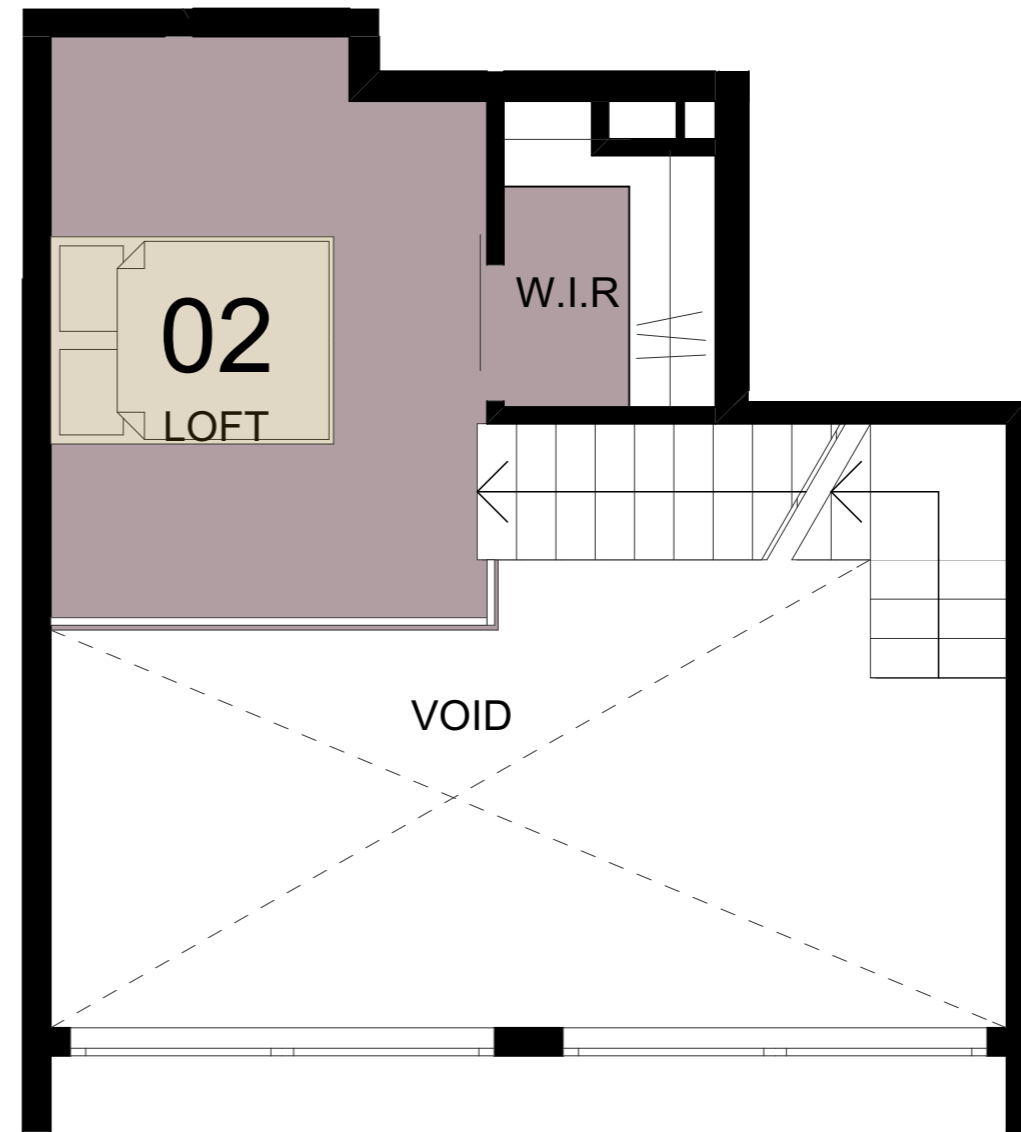
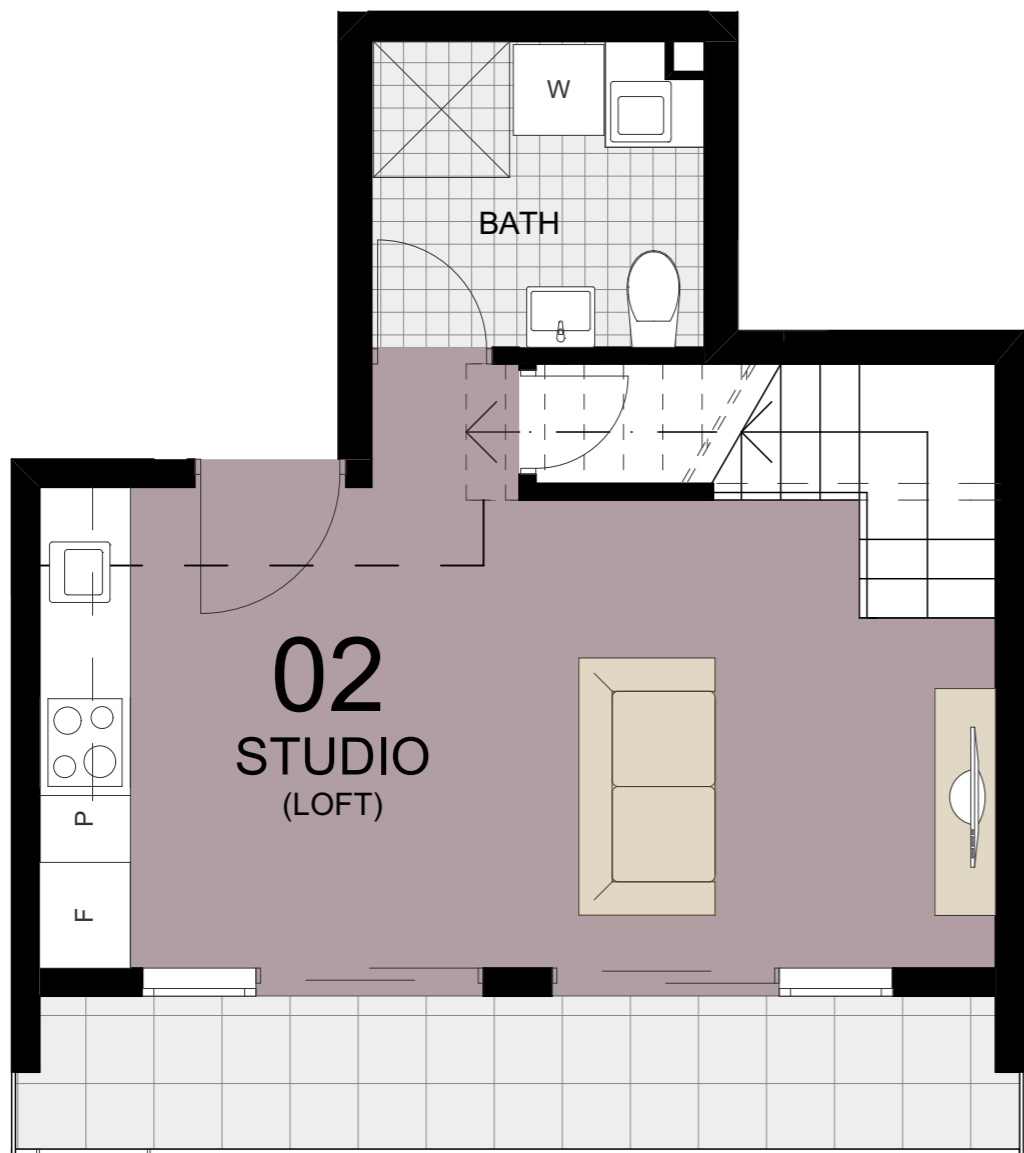
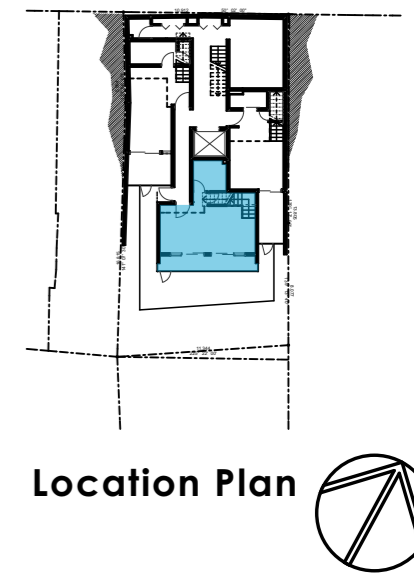
Apartment	Size (m <sup>2</sup> )	Level	Potential Rent
<b>1</b>	44	LG 1 & 2	\$650-\$700 P.W
<b>2</b>	51	LG 1 & 2	\$670-\$720 P.W
<b>3</b>	49	LG 1 & 2	\$670-\$720 P.W
<b>4</b>	41	Ground	\$580-\$620 P.W
<b>5</b>	36	Ground	\$580-\$620 P.W
<b>6</b>	41	Ground	\$580-\$620 P.W
<b>7</b>	41	1 <sup>st</sup> Floor	\$580-\$620 P.W
<b>8</b>	46	1 <sup>st</sup> Floor	\$600-\$650 P.W
<b>9</b>	39	2 <sup>nd</sup> Floor	\$600-\$650 P.W
<b>10</b>	41	2 <sup>nd</sup> Floor	\$600-\$650 P.W
		5 Levels	



**Typical Plan Unit 1**

Area	Unit 1
Internal	35.18 m <sup>2</sup>
External	5.77 m <sup>2</sup>
Bike Store	0.88 m <sup>2</sup>
Total	41.83 m <sup>2</sup>

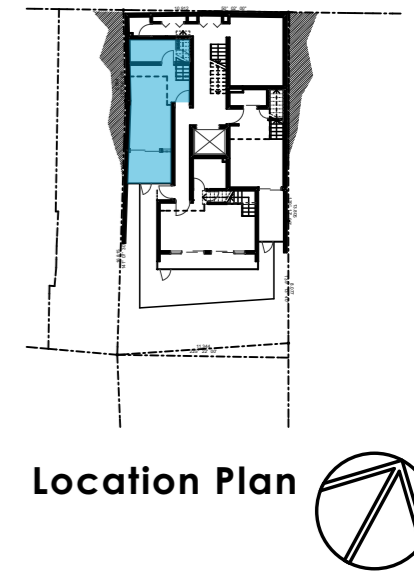
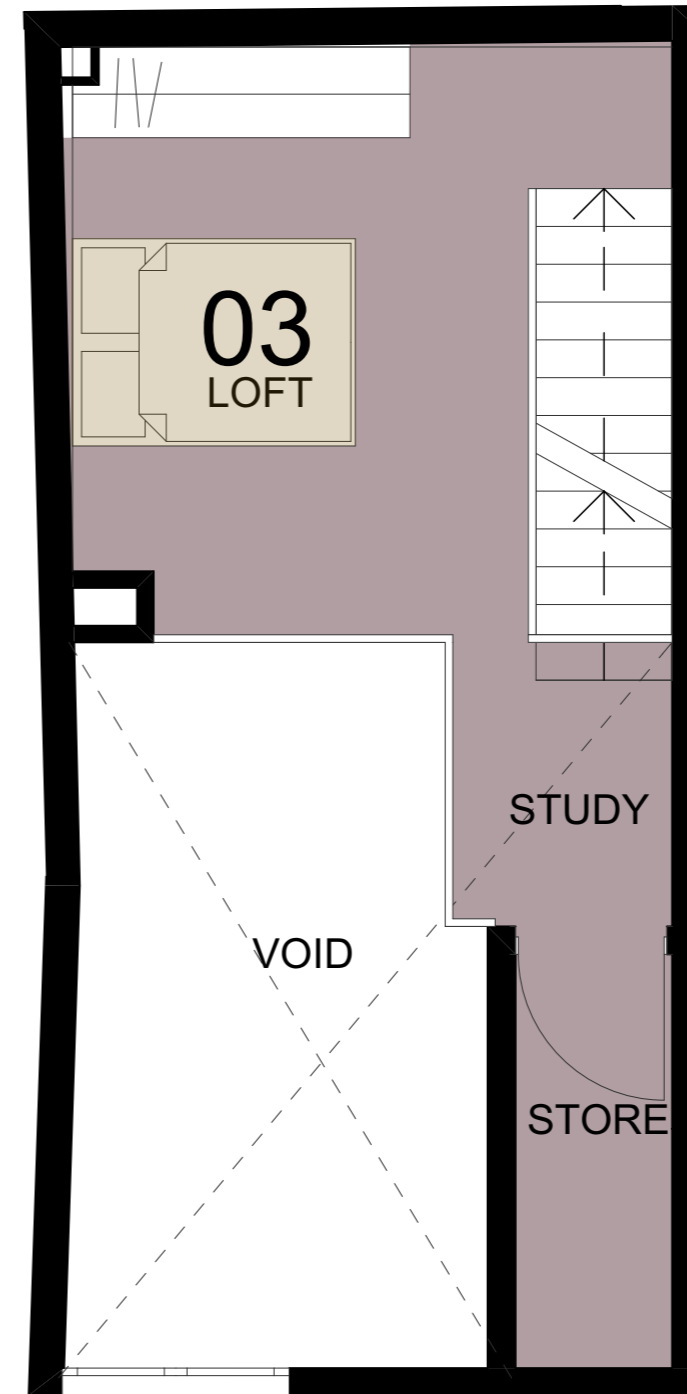
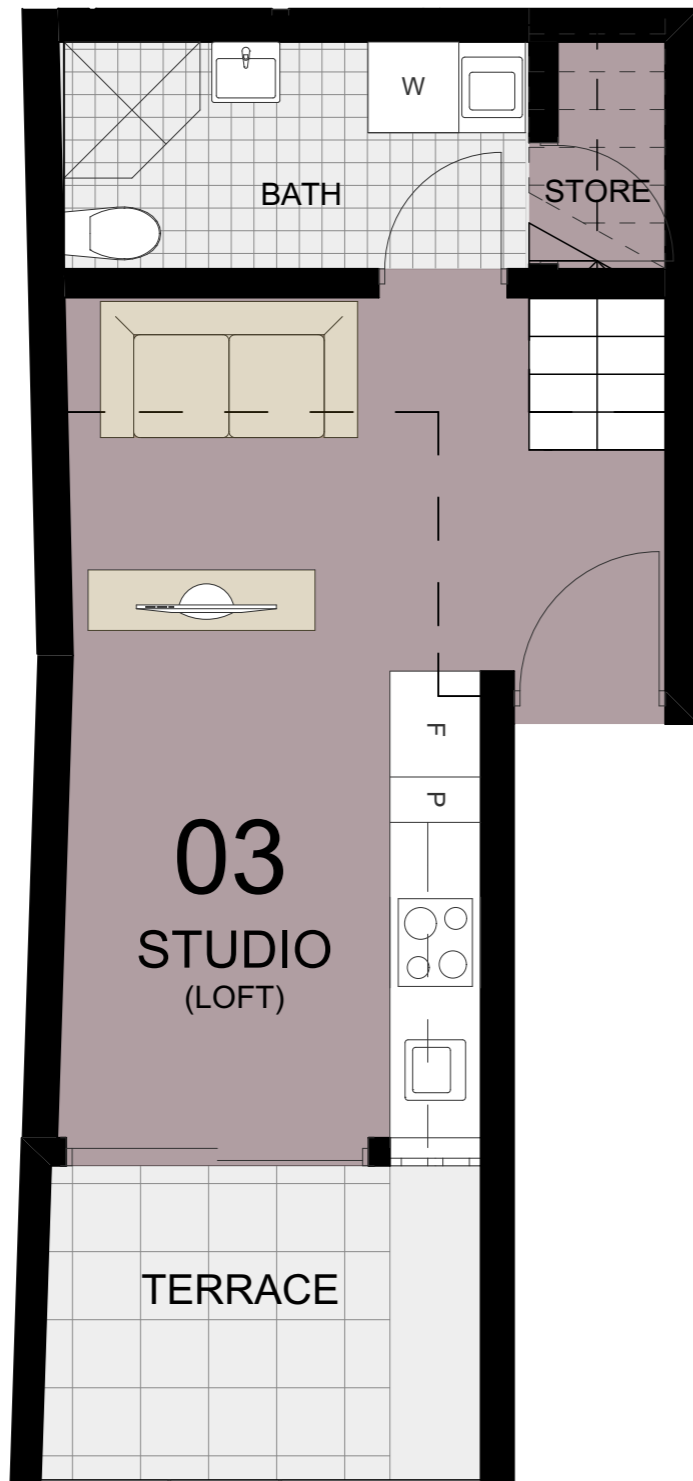




**Typical Plan Unit 2**

Area	Unit 2
Internal	42.59 m <sup>2</sup>
External	6.77 m <sup>2</sup>
Bike Store	0.88m <sup>2</sup>
Total	50.24m <sup>2</sup>

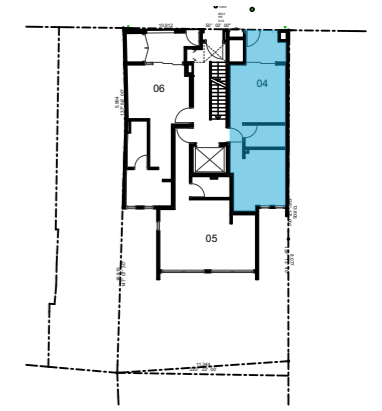




**Typical Plan Unit 3**

Area	Unit 3
Internal	44.29 m <sup>2</sup>
External	6.01 m <sup>2</sup>
Bike Store	0.88m <sup>2</sup>
Total	51.18 m <sup>2</sup>





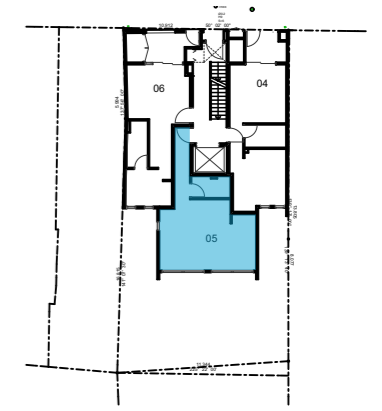
Location Plan 

**Typical Plan Unit 4**

Area	Unit 4
Internal	35.09 m <sup>2</sup>
External	5.41 m <sup>2</sup>
Bike Store	0.88m <sup>2</sup>
<b>Total</b>	<b>41.38m<sup>2</sup></b>







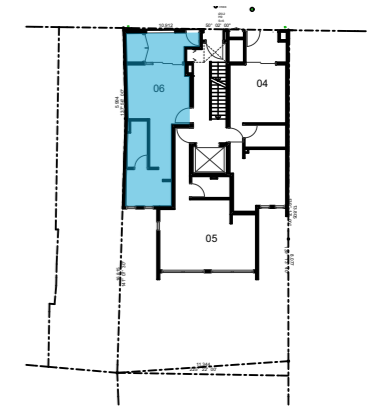
Location Plan



**Typical Plan Unit 5**

Area	Unit 5
Internal	38.10 m <sup>2</sup>
External	0.00m <sup>2</sup>
Bike Store	0.88m <sup>2</sup>
Total	38.98 m <sup>2</sup>



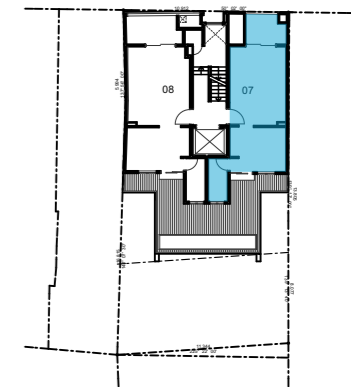


Location Plan 

**Typical Plan Unit 6**

Area	Unit 6
Internal	35.16 m <sup>2</sup>
External	5.89 m <sup>2</sup>
Bike Store	0.88 m <sup>2</sup>
<b>Total</b>	<b>41.93 m<sup>2</sup></b>





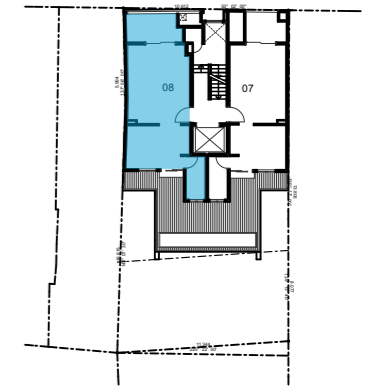
Location Plan



**Typical Plan Unit 7**

Area	Unit 7
Internal	35.03 m <sup>2</sup>
External	5.03 m <sup>2</sup>
Bike Store	0.88m <sup>2</sup>
Total	40.94m <sup>2</sup>





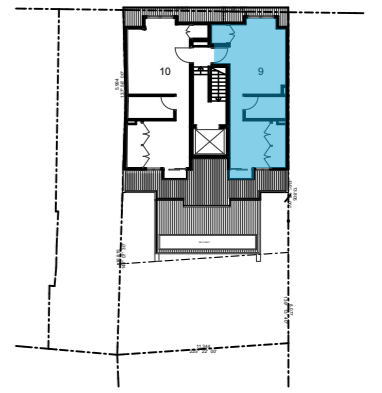
Location Plan



**Typical Plan Unit 8**

Area	Unit 8
Internal	37.74 m <sup>2</sup>
External	6.68m <sup>2</sup>
Bike Store	0.88m <sup>2</sup>
Total	45.30 m <sup>2</sup>





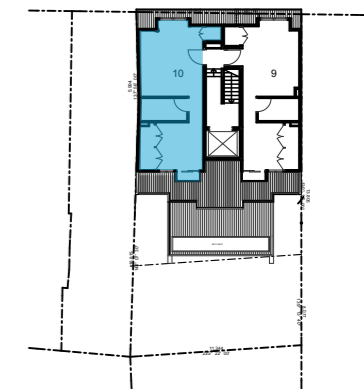
Location Plan



**Typical Plan Unit 9**

Area	Unit 9
Internal	38.96 m <sup>2</sup>
External	1.00m <sup>2</sup>
Bike Store	0.88m <sup>2</sup>
Total	40.84m <sup>2</sup>





Location Plan



**Typical Plan Unit 10**

Area	Unit 10
Internal	41.21 m <sup>2</sup>
External	1.00 m <sup>2</sup>
Bike Store	0.88m <sup>2</sup>
Total	43.09 m <sup>2</sup>

