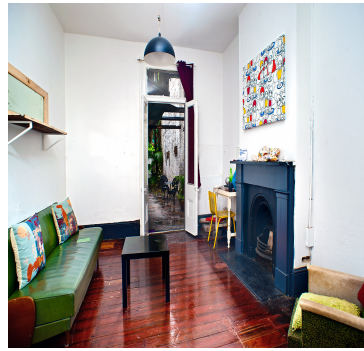


142 Burton Street, Darlinghurst



Description

Ultra convenient, Classic original 3 level Victorian terrace Spanning over 3 spacious light filled levels and located opposite St Vincent's Hospital & Green Park, this original terrace features period details throughout, a prized North facing courtyard, accommodating 5-6 large bedrooms, large eat-in kitchen, 2 bathrooms & valuable rear lane car access Via Hayden Place. Currently operating as shared accommodation, it offers a wonderful opportunity to restore the property back to its original Victorian splendour or capitalise on the property's B4 mixed use zoning which allows for a variety uses S.T.C.A such as professional suites, consulting rooms, multiple accommodation, B&B, the choice is yours. An inner city treasure close to all amenities and all the City has to offer.

Property Details

Property Address: 142 Burton St, Darlinghurst, NSW 2010

Land area: 173

Bedroom: 7

Bathroom: 2

Car Space / Garage: 1

Agents's Details

Agent's name: Dominic D'Ettorre

Mobile: 0411 389 384

Phone: 02 8354 0896

Email: dominic@dettorre.com.au

“CHOOSE TO MAKE IT HAPPEN”

Copyright 2015, D'Ettorre Real Estate