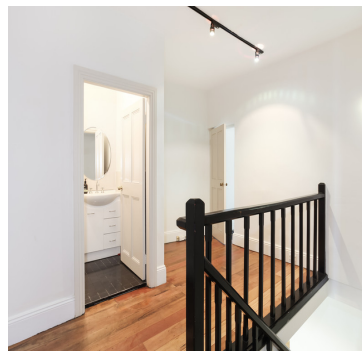
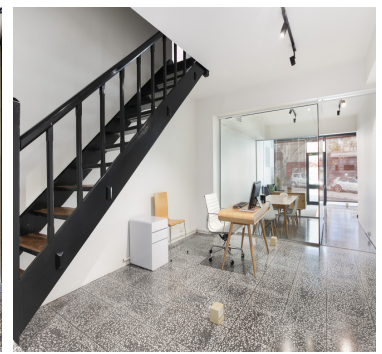


98 Foveaux Street, Surry Hills



Description

Stunning 3 level sandstone Victorian terrace featuring Showroom/Office & Warehouse + 3rd level Value add potential (STCA) Nestled between Riley & Crown Street, Surry Hills Flexible layout with light filled interiors A fusion of classic character features and stylish modern design Handy industrial roller door access to 4-5 car parking, tandem style or storage Valuable side driveway access 3 modern WC's Ground floor and top floor accommodate kitchen's Further value add potential Impressive open plan gallery/office featuring terrazzo tiled floors Third level features front and huge rear outdoor terrace areas with potential to extend and enclose STCA Land area approximately 180sqm Zoned B4 Mixed Use, allowing an array of usage rights Currently let on a month to month basis to two separate tenants. Gross rent \$11,300 + GST per month. Surry Hills is now recognised as one of Sydney's most desired inner-city locations, with a rich and colourful history, entertaining an electric mix of famed bars, cafes and eateries.

Property Details

Property Address: 0, 0, 0 0

Agents's Details

“CHOOSE TO MAKE IT HAPPEN”

Copyright 2015, D'Ettorre Real Estate