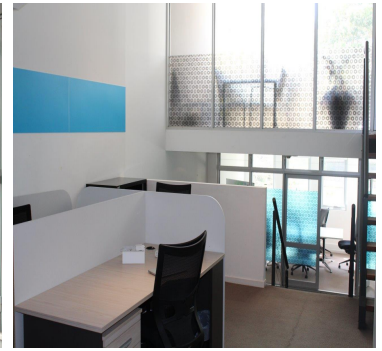
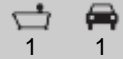


Level 1/234 Crown Street, Darlinghurst



## Description

Light filled modern first level office space. Features: 100sqm +of split level office/creative space Spacious separate board-room Delightful generous balcony enjoying leafy outlook Large open plan design Modern bathroom & updated kitchen facilities Fully air-conditioned & intercom Oversized valuable lock garage/plus storage Handy rear lane access for both car and pedestrian access Garage has direct access to office Metres from vibrant Oxford Street's cafes, eateries and transport. Stroll Museum railway and Hyde Park 24 Hour access, available now! This Inner-City workplace is perfect for those seeking a professional modern working environment! Ideal corporate Head Quarters. Inspect by appointment

## Property Details

**Property Address:** 234 Crown Street, Darlinghurst, NSW 2010

**Internal Space:** 100

**Bathroom:** 1

**Car Space / Garage:** 1

**Agent's Profile:** [click to view profile](#)

## Agents's Details

**Agent's name:** Eric Zaurrini

**Mobile:** 0419 925 888

**Phone:** (02) 8354 0896

**Email:** [eric@dettorre.com.au](mailto:eric@dettorre.com.au)

**Agent's name:** Domonic Dettorre

**Mobile:** 0411 089 084

**Phone:** (02) 8354 0896

**Email:** [dominic@dettorre.com.au](mailto:dominic@dettorre.com.au)

“CHOOSE TO MAKE IT HAPPEN”

Copyright 2015, D'Ettorre Real Estate